



A SEAMLESS HOTEL EXPERIENCE IN TAGUIG CITY'S PREMIER LIFESTYLE DESTINATION

The flagship hotel of the Seda brand offers an urban retreat that reflects the cosmopolitan lifestyle of travelers in search of a vibrant destination in Manila. With a brand-new second tower that offers guestrooms, suites, and serviced residences, this 521-room hotel is perfect for business or leisure travel, short-term or long-stay. Seda BGC is 30 minutes from the Ninoy Aquino international airports and domestic terminals, and the Makati central business district. It is also just a few steps to the restaurants and shops of Bonifacio High Street and Serendra.

Seda BGC -- weaving destination, service and value for a remarkable hospitality experience.



Learn more about Seda BGC by scanning the QR code above



GUEST ROOMS

EXECUTIVE DELUXE (30 SQM)

Choice of a king bed or twins, with a multi-purpose table and chaise lounge or two-seater sofa

DELUXE ROOM (30 SQM)

Choice of a king bed or twins, with an executive desk and alcove seat

CLUB ROOM (30 SQM)

Offers access to the Club Lounge with express check-in/out; daily Continental breakfast, afternoon tea and cocktails; all-day coffee, tea and non-alcoholic beverages; meeting room; iMac work stations; multi-purpose tables; LED HDTV with cable channels; secretarial assistance

SUITE (45 SQM)

Separate master bedroom and living room, bath tub, kitchenette, and Club Lounge access

EXECUTIVE SUITE (60 SQM)

Master bedroom with writing desk and double sink; living room with powder room and toilet; kitchenette; and Club Lounge access

SEDA SUITE (91 SQM)

Master bedroom with sofa and side table, walk in closet, vanity table, double sink, and bath tub; 10-seater dining table; living room; kitchenette; powder room; connecting Club Room; and Club Lounge access

In-room Amenities

- Coffee- & tea-making facility
- Complimentary WiFi
- IDD phone
- LED HDTV with cable channels
- Media panel and/or HDMI, USB and audio-visual connectivity
- Mini-bar
- Safety deposit box

SERVICED RESIDENCES

STUDIO (45 SQM)

King bed, L-type sofa and coffee table, multi-purpose working/dining table, LED HDTV with cable channels; kitchenette

ONE-BEDROOM (58-60 SQM)

Master bedroom with king bed, writing desk and work chair, bath tub; four-seater dining table; living room with sofa, lounge chair and coffee table; LED HDTV with cable channels in both rooms; kitchenette; washer/dryer

Kitchenette Amenities

- China/glass/silverware
- Dish rack
- Induction cook top with range hood
- Electric kettle
- Microwave oven
- Oven toaster
- Full sized refrigerator
- Rice cooker
- Kitchen tools

FACILITIES & SERVICES

- Airport and city transfers
- Club Lounge
- E-lounge
- Function rooms
- Gym
- In-room dining
- In-room massage
- Laundry and dry-cleaning
- Lifestyle Manager assistance
- Parking
- Swimming pool
- Complimentary WiFi

RESTAURANT & BAR

MISTO

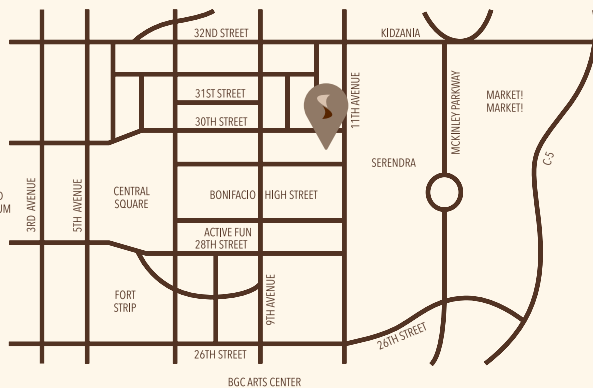
An all-day dining restaurant that offers a medley of classic international dishes and local favorites

STRAIGHT-UP

Roof top bar with relaxing music, great drinks and delicious pica-pica amid a spectacular view of the skyline

PLACES OF INTEREST

- Serendra shops and restaurants
- Bonifacio High Street
- BGC Arts Center
- Public Wall Art
- Kidzania
- Market! Market! Mall
- Central Square Mall
- Mind Museum
- Active Fun



T: (632) 7945 8888
F: (632) 7945 8891
E: bgc@sedahotels.com

30th St. cor. 11th Ave.
Taguig, Metro Manila
1634 Philippines



@sedahotels
SEDAHOTELS.COM



Seda BGC offers versatile function venues that can be used for top-level board meetings to medium-size and bigger business and social events. Straightforward, themed, or in-between, space flexibility and our team's creativity allow excellent options for different needs. Complimentary WiFi, a range of amenities and efficient service ensure a smooth event flow from start to finish.

VELVET 1, 2, 3 | Biggest event venue that can be used as three individual rooms, or one big space for up to 300 persons, with a versatile pre-function area

SATIN 1, 2, 3 | Adjoining function rooms divisible into three, or utilized as one venue for up to 140 persons

COTTON | Ideal for small groups or intimate events with up to 30 people

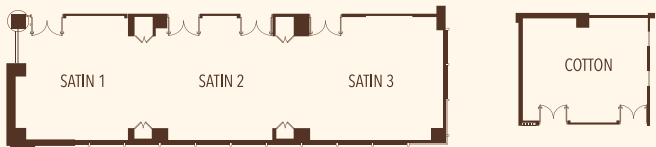
MERINO 1, 2 | Its standard U-shaped set-up can accommodate up to 18 persons

BOARDROOM 1, 2 | Perfect for private meetings with up to 12 participants

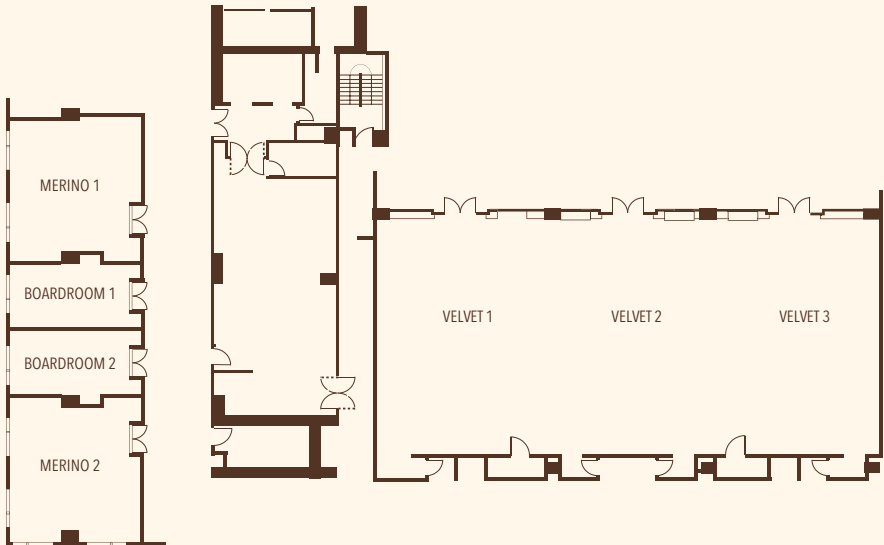


Learn more about Seda BGC by scanning the QR code above

ORIGINAL BUILDING



EXPANSION TOWER



DIMENSIONS

MEETING ROOM	L x W (METERS)	L x W (FEET)	FLOOR AREA (SQM)	CEILING HEIGHT (METERS)
Satin 1	6.70 x 6.61	21.88 x 21.68	44	4
Satin 2	7.90 x 6.61	25.91 x 21.68	52	4
Satin 3	9.09 x 6.61	29.82 x 21.68	60	4
Cotton	8.00 x 6.65	26.24 x 21.81	53	4
Satin 1 & 2	14.60 x 6.61	47.79 x 21.68	97	4
Satin 2 & 3	16.99 x 6.61	55.73 x 21.68	112	4
Satin 1, 2 & 3	23.69 x 6.61	77.61 x 21.68	160	4
Velvet 1 / 2 / 3	15 x 10	49.21 x 32.80	150	3.9
Velvet 1, 2 & 3	15 x 10	49.21 x 98.42	450	3.9
Merino 1 / 2	7.50 x 8.40	26.60 x 27.55	66.73	3.9
Boardroom 1 / 2	7.50 x 3.80	24.60 x 12.46	30.57	3.9

CAPACITIES

MEETING ROOM	ROUNDS	THEATER	CLASSROOM	BOARDROOM	U-SHAPE
Satin 1	30	40	20	18	18
Satin 2	30	40	20	18	18
Satin 3	40	50	50	24	24
Cotton	30	35	15	15	15
Satin 1 & 2	50	80	50	25	25
Satin 2 & 3	60	80	60	30	30
Satin 1, 2 & 3	100	140	90	-	-
Velvet 1 / 2 / 3	80	110	72	-	-
Velvet 1, 2 & 3	300	330	216	-	-
Merino 1 / 2	-	-	-	18	18
Boardroom 1 / 2	-	-	-	12	-



@sedahotels
SEDAHOTELS.COM

T: (632) 7945 8888
F: (632) 7945 8891
E: bgc@sedahotels.com

30th St. cor. 11th Ave.
Taguig, Metro Manila
1634 Philippines