



A SEAMLESS HOTEL EXPERIENCE IN CEBU CITY'S PREMIER LIFESTYLE DESTINATION

Seda Ayala Center Cebu is a 301-room hotel strategically located at the heart of the city's financial district. Newly-refurbished to reflect a streamlined, contemporary design, this popular business and social hub offers a range of comforts and conveniences essential to the modern traveler and other visitors to this "Queen City of the South".

Seda Ayala Center Cebu is right next to Ayala Malls and 45 minutes from the Mactan International Airport, with convention centers, golf courses, and major tourist attractions just a few minutes' drive.

Seda Ayala Center Cebu -- weaving destination, service and value for a remarkable hospitality experience.



Learn more about Seda Ayala Center Cebu by scanning the QR code above



GUEST ROOM

DELUXE ROOM

Equipped with modern amenities in a comfortable 32 sqm area

CLUB ROOM

Located on the 11th and 12th floor with the same features as a Deluxe Room and offering access to the Club Lounge with its exclusive amenities such as daily Continental breakfast, afternoon tea and cocktails; all-day coffee, tea and non-alcoholic beverages; work tables; reading materials; a wide-screen LED HDTV with cable channels; and secretarial assistance.

SUITE

Bedroom with a receiving area in a 40 sqm space, and offering access to the Club Lounge

CLUB SUITE

Bedroom has its own bath and tub, and is separated by a sliding door from the living/dining area with a dry pantry and powder room – all on a 66 sqm area; and offering access to the Club Lounge

PRESIDENTIAL SUITE

One-bedrooms with their own bath (and a tub in the master's), a living room, dining room, guest's powder room, and a kitchenette in a 83 sqm area on the highest guestroom floor; and offering access to the Club Lounge

IN-ROOM AMENITIES

- 48-inch LED HDTV with cable channels and provisions for HDMI and USB connectivity
- Internet connectivity
- IDD phone
- Complimentary WiFi and internet access
- Mini-bar
- Coffee and tea-making facilities
- Safety Deposit Box

RESTAURANT & BAR

MISTO

An international restaurant that offers a medley of international and local dishes on the breakfast, lunch and dinner buffets, as well as a la carte dining all-day

POOL BAR

Snacks and tropical thirst-quenchers in a garden setting



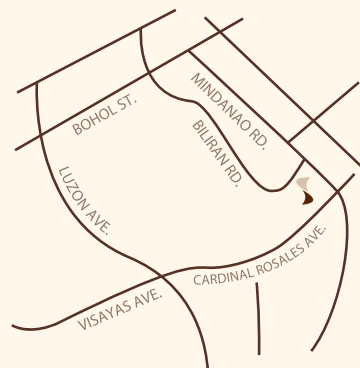
FACILITIES & SERVICES

- Airport and city transfers
- Boardrooms, function venues and a ballroom for up to 350 persons
- Club Lounge
- E-lounge
- Gym
- In-room dining
- In-room massage
- Laundry and dry cleaning
- Parking
- Swimming Pool
- Complimentary WiFi

PLACES OF INTEREST

- Ayala Center Cebu shopping mall
- Casa Gorordo Museum
- Cebu Country Club
- Fort San Pedro
- Magellan's Cross

- The Weekend Market (Sugbo Mercado)
- Museo Sugbo
- Taoist Temple



@sedahotels
SEDAHOTELS.COM

T: (032) 411 5800
F: (032) 411 5801
E: accebu@sedahotels.com

Cardinal Rosales Avenue
Cebu Business Park
Cebu City 6000, Philippines



Seda Ayala Center Cebu offers versatile function venues that can be used for top-level board meetings or grand social events. Straightforward, themed, or in-between, space flexibility and our team's creativity allow excellent options for different needs. Complimentary WiFi, a range of amenities and efficient service ensure a smooth event flow from start to finish.

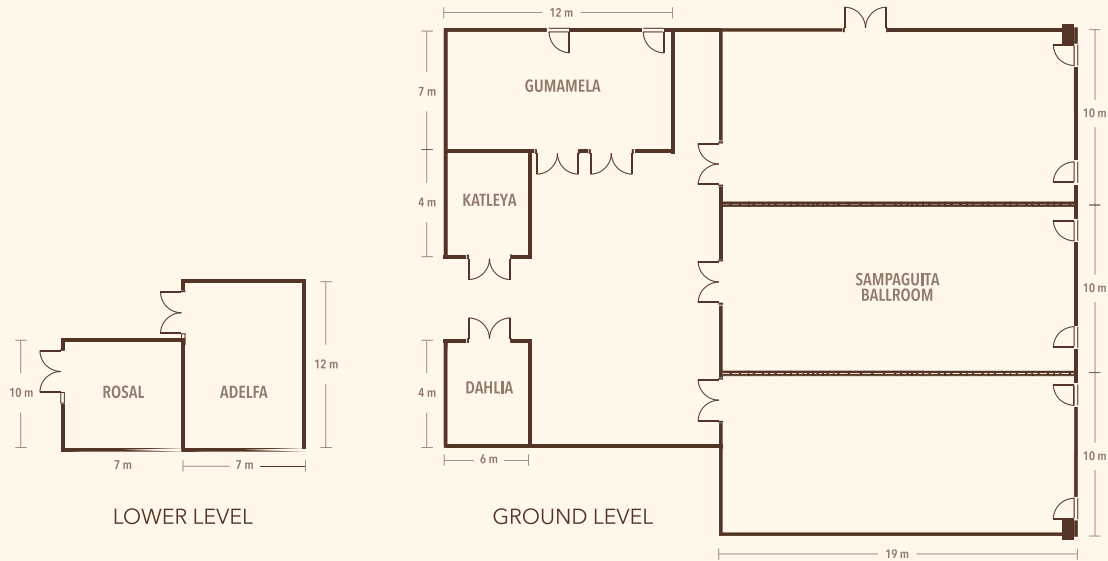
SAMPAGUITA BALLROOM | Spacious venue for conferences or social affairs with up to 350 persons; also divisible into three separate event spaces

GUMAMELA, ROSAL, ADELFA | Ideal for medium-sized groups of up to 50 persons

DAHLIA, KATLEYA | Meeting spaces for up to 10 persons



Learn more about Seda Ayala Center Cebu by scanning the QR code above



DIMENSIONS

MEETING ROOM	L x W (METERS)	L x W (FEET)	FLOOR AREA (SQM)	CEILING HEIGHT (METERS)
Pre-Function Areq	6.5 x 10.5	21.3 x 34.4	68	3.5
Sampaguita Ballroom	6.5 x 10.5	21.3 x 34.4	68	3.5
Sampaguita 1	6.5 x 10.5	21.3 x 34.4	68	3.5
Sampaguita 2	13 x 10.5	42.6 x 34.4	136	3.5
Sampaguita 3	13 x 10.5	42.6 x 34.4	136	3.5
Gumamela	19.5 x 10.5	162.36 x 34.4	204	3.5
Rosal	6.5 x 11.4	21.32 x 37.4	74	3.2
Adelfa	5 x 4.8	16.4 x 15.7	24	3.2
Katleya	5 x 4.8	16.4 x 15.7	24	3.2
Dahlia	5 x 4.8	16.4 x 15.7	24	3.2
Business Center 1	5 x 4.8	16.4 x 15.7	24	3.2
Business Center 1	8 x 4.8	26.24 x 15.7	38	3.2

CAPACITIES (for Corporate/Essential Meetings)

MEETING ROOM	COCKTAILS	ROUDNDS	THEATER	CLASSROOM	BOARDROOM	U-SHAPE
Pre-Function Area	40	-	-	-	-	-
Sampaguita Ballroom	450	350	500	220	-	-
Sampaguita 1	100	110	150	90	30	40
Sampaguita 2	100	110	150	90	30	40
Sampaguita 3	100	110	150	90	30	40
Gumamela	50	50	70	40	23	26
Rosal	40	40	60	30	23	20
Adelfa	50	50	70	40	23	26
Katleya	-	-	-	-	10	-
Dahlia	-	-	-	-	10	-
Business Center 1	-	-	-	-	10	-
Business Center 1	-	-	-	-	10	-

 
@sedahotels
SEDAHOTELS.COM

T: (032) 411 5800
F: (032) 411 5801
E: accebu@sedahotels.com

Cardinal Rosales Avenue
Cebu Business Park
Cebu City 6000, Philippines

EQUIPMENT AND FACILITIES

- WiFi / Internet Access
- LCD Projector and Screen
- Stage, Dance floor, Riser, Podium
- Basic Sound System
- White Board / Flip Chart

PACKAGES

- Conferences and Meetings
- Social Events



#SafeAtSeda

SAFETY & PREVENTION MEASURES

GENERAL

- Comprehensive environmental sanitation and hourly disinfection of high-risk surfaces and touchpoints using EPA-registered / hospital-grade products
- High-temperature steamer for cleaning and deodorizing upholstery in guestrooms and meeting rooms, and of lobby and restaurant couches
- Temperature check and footwear sanitation prior to hotel entry
- Verification of vaccination card
- Wearing of face mask in public areas
- 70% alcohol-based hand sanitizer available in various areas of the hotel
- Physical distancing markers
- Signages about personal hygiene practices and general guidelines in highly-visible areas; with audio reminders in elevators
- Required spacing between tables and seats in dining outlets, meeting spaces, lobby, pool, and gym

CHECK-IN

- Health Checklist & Travel Declaration form must be accomplished
- Online check-in encouraged
- Protective screen at the Front Desk counter between guests and staff

BELL SERVICE

- Luggage disinfection upon arrival
- Luggage assistance only upon request
- Luggage brought up by bellmen are left outside the guestroom door

MEETINGS & EVENTS

- Cocktail and buffet service are temporarily not available
- Food is plated or pre-packed in individual containers
- Desk pads and pens are provided only upon the guest's request

RESTAURANTS

- Indoor dining is exclusively for fully-vaccinated guests; vaccination card must be presented prior to entry
- Tables and seats follow physical distancing regulations
- Menus in QR codes

GUESTROOM

- Maximum number of room occupants corresponds to room size
- Switching/transferring of rooms is not allowed
- Reduction in room amenities like hair dryer, note pad and pen, throw pillows and bed runner (but available upon request)
- Temporary removal of mini-bar and reusable items
- Housekeeping service is provided only when the guest is not in the room

IN-ROOM DINING

Orders will be individually-packed and left outside the guestroom door

EMPLOYEES

- Thermal scanning is required prior to hotel entry
- Personal protection gear is worn at all times
- Continuous training in personal hygiene practices and strict adherence to safety and prevention measures
- Physical distancing in work stations and when interacting with guests

